



LCC INTERNATIONAL
UNIVERSITY

25 YEARS
OF INTERNATIONAL
EDUCATION



ANNUAL REPORT

2016 - 2017



LCC INTERNATIONAL UNIVERSITY

MISSION STATEMENT

LCC International University provides Christian liberal arts education within a diverse learning community that transforms people for servant leadership.

VISION STATEMENT

To engage students in a transforming educational experience in order to create a generation of leaders for Lithuania, Eastern Europe, and Central Asia who think critically, promote democratic ideals, develop a market economy, and re-build the network of civil society within the context of a Christian worldview.



The 2016-2017 faculty and staff

PRESIDENT'S MESSAGE



President Marlene Wall, PhD

Happy 25th, LCC!

How old are we? How old is 25?

We're old enough . . .

- to have begun in the Soviet Union, and today reside in the European Union.
- to own a full campus, which addresses our needs, has space for growth, and is fully paid for.
- to be recognized in Lithuania and around the world as an accredited institution, yes, but also as an institution with a particular DNA, a particular identity and mission and vision.
- to have more than 1700 alumni from 25 countries.

- to have a network of thousands of people who support the mission of LCC – through generous donations of finances or time, and of faithful commitment to prayer.
- that most of today's LCC students were not even born when we began in 1991.

But, let's flip the question. How young are we? We're young enough . . .

- to still remember our beginnings. We reminisce with gratitude for God's provisions and protection, with laughter at the memories, and with amazement at what we sometimes call the miracle of LCC.
- that we haven't let the weight of policies and bureaucracy burden us from a type of agility and flexibility that is so important in a world where turbulent change can disrupt and reshape.
- to dream. We want to do more, to be more, to develop more, to attract more, to transform more. We acknowledge how far we've come, but we see a future of possibilities just beyond the horizon. We live in this unique world between "remember when" and "what if." Both the past and the future are important.

So, as we reflect on 2016-2017, we allow ourselves the freedom to look back to the past with gratitude, to envision the future with optimism, and to live in the present with unity, encouraging each other for tougher journeys "out there." We're old enough to make a difference in the world. And we're young enough to think we can.

With gratitude,

Marlene

25TH ANNIVERSARY





THIS YEAR AT LCC (2016-2017)

FIRST MA IM GRADUATION

August, 2016

The first cohort of students graduated with a M.A. degree in International Management provided in collaboration with US-based Taylor University.



LCC GEORGIA VISIT

September, 2016

Members of the LCC board and administration visited Tbilisi, Georgia in order to better understand this important region for LCC. While the Middle East Scholars program will not be located in Georgia, the strong relationships in the country offer great potential for future engagement.



CHRISTMAS PROGRAM

December, 2016

LCC invited a special guest from Canada, Connie Epp, to direct the Christmas program. Connie, together with an LCC team of actors, singers, and stage crew, presented “Messy Hope”, a contemporary reflection of the nativity story.



JANUARY SERIES

January, 2017

LCC continues as one of the 50 remote and as the only Non-American webcast locations worldwide to broadcast the award-winning January Series of Calvin College, USA.



AMBASSADORS FROM GEORGIA AND USA

February, 2017

LCC welcomed the US ambassador to Lithuania Anne Hall and Georgian ambassador to Lithuania Khatuna Salukvadze.



BASKETBALL - 2ND PLACE IN ISBL

May, 2017

LCC Moose participated in ISBL (International Student Basketball League) and took the 2nd place among 12 teams from Russia, Kazakhstan, Estonia, Latvia and Georgia.



YAZIDI EXHIBITION

March, 2017

“Moments from Yazidi Life in Khanke Camp, Iraq” exhibition was brought by LCC to Lithuania. An LCC student from Iraq together with 5 other Yazidi photographers captured their experience in Khanke camp (Iraq). The pictures were exhibited at the National Roman Museum MAXXI in January this year.



CHICK-FIL-A SUMMER EMPLOYMENT

Summer, 2017

28 LCC students went to the United States for summer employment at Chick-Fil-A. This is a wonderful opportunity for students to gain valuable work experience, develop team-work skills, and earn income to cover their living and study expenses.

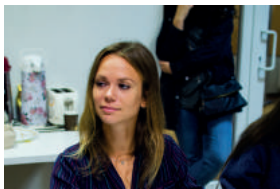


LCC ALUMNI

LCC is proud of the more than 1900 LCC alumni, scattered in many parts of the world.

Alumni on Campus Days

LCC hosted 5 alumni in the Alumni-on-Campus program. Their life stories inspire our current students, and are affirmation of the mission of LCC.



Aistė Ridikaitė
(class of 2005)
professional photographer



Nomedė Gudėlienė
(class of 1998)
Deputy Vice-Rector for Research
and International Relations
at Mykolas Romeris University



Rogerio Silva
(class of 2016) M.A.
businessman, owner of US
franchise “Subway”, located in Klaipėda



Odeta Kirnienė
(class of 2001) director
at “RUTA” chocolate
museum and cafe in Siauliai.



Lina Toth
(class of 2001)
Assistant Principal and Lecturer in
Practical Theology at the Scottish Baptist College,
University of the West of Scotland

Distinguished Alumni



Donatas Ramonas
(class of 1998)
founder of consulting
company CRS Consulting

Young Distinguished Alumni



Daumantas Kirkutis
(class of 2011)
Entrepreneur,
executive at
paslaugos.lt

Alumni Giving

LCC started this celebratory year with a new fundraising campaign - the 25@25 LCC Alumni Endowed Scholarship aiming to collect 25,000 USD which will then generate interest for an annual scholarship for years to come.

Alumni Survey

This year LCC invited all current alumni to participate in an alumni survey. 561 graduates representing classes from 1996 to 2015 participated in the survey.

Top 5 Countries Where LCC Alumni Reside:

UK | USA | Lithuania | Germany | Sweden

50

countries
alumni reside in

80 %

are employed

45 %

completed or are
enrolled in M.A.
degree program

94 %

said that LCC very well/adequately
prepared them for current position

Alumni Say They Are

93 %

very or generally
satisfied with their
education at LCC

90 %

would recommend
LCC as a place to
study

94 %

are satisfied with
their life right
now



“LCC is very often on my mind, those were one of the best memories I have made and it definitely gave a head start to my career and lifelong friendships. Being a person from post-Soviet Union country with no parents would direct me to a completely different path if not for LCC. This institution gave me valuable social skills and taught me to see myself as a worthy individual and believe that I can achieve more, taught me to think big and creatively.”

Graduate from Russia



J.D. Mininger
Vice President, Academics

ACADEMICS

TRANSITION

The 2016-17 academic year included a transition in academic leadership, from Dr. Kirk Kauffeldt's legacy of new programs, faculty growth, and focus on academic quality, to Dr. J.D. Mininger, who entered into the role of Academic Vice-President and Dean of Faculty in January 2017. Along with much experience and success as both a classroom instructor and active scholar, Dr. Mininger is a strong advocate for LCC's Christian liberal arts model of education.

At LCC, liberal arts is not merely a curricular model, it's an institutional ethos — one which extends from active classroom pedagogy to developing student leadership skills to the deeply held beliefs that students are not numbers and that our university does not exist to simply manufacture graduates.

RESEARCH COUNCIL

The research culture at LCC continues to undergo notable improvement. As a means for promoting and supporting research and scholarly activity among faculty and students, a Research Council has been established. Its role is especially important for facilitating and centralizing communication across campus about research-related activities, as well as for developing research structures for the further development and ownership of the Institutional Research Agenda, now gaining momentum and focus under the heading of "human flourishing."

REACCREDITATION

The Master's program in International Management was affirmed through a rigorous reaccreditation process. Both of LCC graduate programs — the MA in TESOL and the MA in International Management — continue to gain visibility on campus, raising the academic bar for scholarship and learning within our LCC community.

ACADEMIC CONFERENCE

March 23-25, 2017, LCC partnered with Samford University and its College of Health Sciences to host an academic conference, titled "Health and Human Flourishing: Multidisciplinary Perspectives". The conference brought together Christian scholars from countries including USA, Germany, South Africa, Czech Republic, Hungary and Lithuania to share research and consider future opportunities for scholarly collaboration.

FAREWELL LECTURE

In January 2017, Emeritus Professor of Economics, Dr. Eric Hinderliter, gave his honorary "last lecture" entitled "My Ebenezer," a reference to Samuel 7:12. Eric and Becky Hinderliter, mission co-workers with the Presbyterian Church USA, retired from LCC after 16 years of teaching and faithful service.





Margarita Pavlovič
Vice President, Student life

STUDENT LIFE

The Student Life Division continues to ensure the holistic approach to the educational experience at LCC by engaging students in meaningful co-curricular activities and programs.

Spiritual Life

The Spiritual Life Department continues to share the good news of Jesus with all students, and facilitates programs that encourage faith exploration and development.

20

LCC students
led Christian
camp in Vilnius

108

students
attended fall &
spring retreats

81

average
attendance at
28 chapels

Leadership Development Program

Through the Leadership Development Program students have opportunity to engage the best practices of servant leadership within a university program.

46

student
leaders

48%

took this
experience for
academic credit

88%

stated they gained
confidence and ability
to influence positive
change

Student Life Counseling

Student Life Counseling Services dealt with 105 one-on-one unique students. All students in acute crisis situations received an intake session within 1-3 days.

Summer Employment Opportunities

57

students were
granted a
microloan

110,000 USD

was distributed
for microloans

99

students went
to US with
Work & Travel

17

students
employed in
Greece

10TH CMAP ANNIVERSARY

LCC continues to educate the community on and off campus through various Intercultural programs and events.

This year, the Community Multicultural Awareness Program (CMAP) celebrated its 10th anniversary. This program attracts students from Klaipeda and the region, with over 800 participants in 10 years. This year 140 high school students were trained on topics of global importance such as equality, human rights, racism, and the refugee experience.
(include large group photo from spring celebration)



LCC MOOSE BASKETBALL

League Results

- LSKL (Lithuanian Student Basketball League) - 5th place in the regular season
- RKL (Regional Basketball League) - made it to the quarterfinals and won 5th place among 16 teams
- ISBL (International Student Basketball League) – 2nd place in ISBL in the final game in May (in Tallinn), losing to Moscow State University.

Social Campaigns

A significant event this year was the Suicide Awareness campaign. Together with the city of Klaipeda and other partners, the LCC Moose organized an event called “Life is worth it” to increase the awareness of mental health problems and to honor lost lives. The team dedicated the game to everyone who is struggling with depression and suicidal thoughts. This campaign attracted national attention.



STUDENT VOICES



Sofio (Georgia)

It is my second year at LCC and it has become my second home. All these people who I met here, students or professors, they are my big international family. LCC unites people from many countries and it does not matter from where you are or what you believe in. Everyone here is different; everyone here is equal.



Lukas (Germany)

Studying at LCC is a truly shaping experience in many ways. This is accurate not only in regards to the academic context, but perhaps even more so in regards to the social environment, with students from more than thirty different countries coming together, sharing and finding out about each other's cultures. The most influential aspect of LCC, however, is that it provides students with opportunities to grow as individuals and leaders by pointing them toward servant leadership that is based on a Christian worldview.



Solomiya (Ukraine)

Why do I like LCC?

To me LCC is a LEGO: just as LEGO provides a free form of play, where a child is encouraged to be creative in what they build, LCC provides a liberal arts education platform, where students are encouraged to put themselves in the most creative forms they can.



Stanford (Zimbabwe)

At our humble yet prestigious LCC International University I have befriended future leaders whose unique stories are tainted with pain but decorated with ambition and hope for a better tomorrow. Here I am challenged and invited to take part in those stories as an active listener or as an agent of God's grace, love and healing and in so doing developed in my capacity to thrive in multicultural settings. LCC International University has made out of me a global citizen.

MIDDLE EAST SCHOLARS PROGRAM

The Middle East Scholars program (MES) was created to provide higher education in English to capable students from war affected areas in Syria and Iraq. After a 2 year process of determining visa pathways to a satellite campus in Georgia, and due to the impact of various political decisions in that region, LCC welcomed the first students to our Lithuania campus in 2016-2017. Six Syrian students and 10 Iraqi students began their studies with us. This change in strategy (from Georgia to Lithuania) has resulted in amazing opportunities to expand our international community and to learn from people whose stories are otherwise dehumanized by the media. These war-affected students come from places such as Mosul and Sinjar, from Aleppo and Damascus. Their worlds now matter at LCC.

After completing their academic English studies, some of these students will choose to remain at LCC for their degree program. For others, LCC does not offer the specific programs of their choice. For these students, LCC is seeking partner institutions in Canada, the United States, and Europe.

The plan for the MES program is to bring a cohort of 12-15 new students from war-affected areas each year.



Middle East Scholars meeting with the Klaipeda mayor



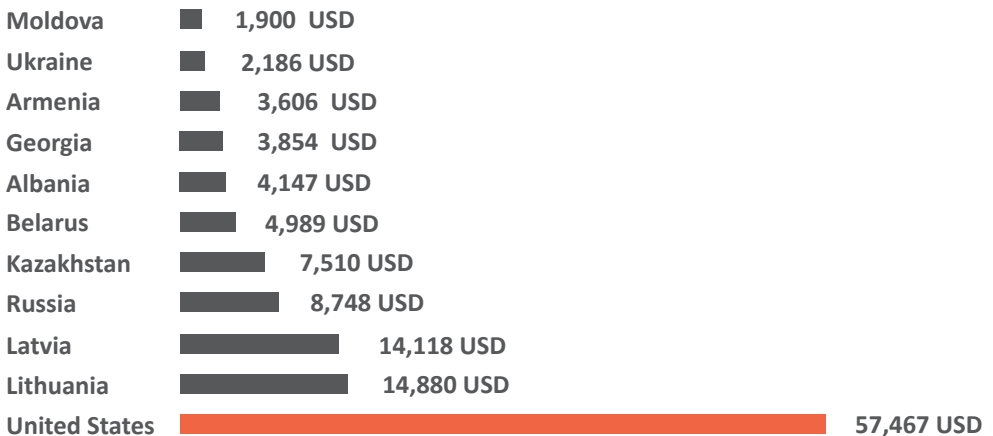
Aistė Motekaitienė
Vice President, Marketing

ADMISSIONS

LCC continues its Admissions work by being present in the countries from which our students come. During the 2016-2017 academic year, LCC added admissions counselors based in Georgia, Albania, Moldova/Kazakhstan, and an additional counselor in Ukraine. These representatives, together with those based in Lithuania, work hard to overcome the challenges of recruitment in this region.

CHALLENGES: regional financial instability and currency fluctuation; declining birthrate (particularly in Lithuania); multiple international options available to students

THE AVERAGE GDP PER CAPITA OF THE TOP 10 COUNTRIES WHERE LCC STUDENTS COME FROM IS 9 TIMES LOWER THAN IN THE USA



STRATEGIES: LCC participates in educational fairs in many countries, visits many high schools and churches, and organizes events to engage prospective students.

One such event is the International Public Speaking Competition, which LCC hosts in Russia, Albania, Ukraine, Georgia, Armenia, Moldova, and Latvia. The winners of these country competitions come to LCC to take part in the international final round. The winner of the final competition wins a free semester of tuition at LCC.





Natalija Zacharova-Nausėdė
Vice President, Human Resources

FACULTY AND STAFF

The role of the HR office is to create a work environment that encourages professional growth, collaborations and a balanced approach to life. During the 2016-2017 Academic year, we organized and hosted various events on campus – professional development and community building. We began incorporating some health initiatives into our work routine to improve health by reducing stress and at the same time increasing collegiality.

FALL 2016

STAFF AWARD FOR EXCELLENCE



Indre Balciunaite
Executive Assistant

FACULTY AWARD FOR EXCELLENCE



Jurgita Babarskiene
Assistant Professor, Social Science
Faculty

SPRING 2017

STAFF AWARD FOR EXCELLENCE



Marius Tamolis
Head Coach, Basketball

FACULTY AWARD FOR EXCELLENCE



Arturo Soto Gonzalez
Director of the M.A. in International
Management

RECOGNITION FOR YEARS OF SERVICE

5 YEARS

Lidiya Didkivska
Dainora Kasperavičiute
Gretchen Ketner
Diana Kvasniauskaite
Marius Tamolis
Steve Van Zanen
Chris Van Zanen

10 YEARS

Oxana Cole
Leila Juzvaite-Gembute
Dr. J.D. Mininger
Femi Odebiyi
Toma Slimaite

15 YEARS

Beata Girskiene
Dr. Marlene Wall

20 YEARS

Dr. Robin Gingerich





Povilas Norbutas, Interim CFO

BUDGET YEAR HIGHLIGHTS

LCC once again ended the fiscal year in the black:

- by meeting the Annual Fund goal of \$900,000 USD
- by increased revenue from facilities rentals
- by benefitting from a positive EUR/USD exchange rate

LCC IS A DEBT FREE INSTITUTION

Annual Fund

3,600,000 USD

LCC ANNUAL BUDGET

LCC achieved the
Annual Fund goal of

900,000 USD

THE VALUE OF CONTRIBUTED
SERVICES OF FACULTY AND STAFF –

1,000,000 USD –

*not included in the budget

**152
donors**

donated to Annual Fund
(an increase of 20% from
previous year)

67%

students receiving
financial aid from
the Annual Fund

4000 USD

annual tuition
for B.A. student

Endowment Performance

Market Value as of August 1, 2016	Market Value as of July 31, 2017	Difference	
403,192 USD	613, 897 USD	210, 705 USD	52%
790,000 CAD	1,442,540 CAD	652,540 CAD	83%

· US Endowment includes endowed scholarships, fellowships, and unrestricted.

· Canadian Endowment includes investments in securities and real estate.

LCC Heritage Society

In LCC's 25th year, the LCC Heritage Society was established to honor the legacy of generous donors who wish to strengthen the institution for future generations.

11 members in LCC Heritage Society



BOARD OF DIRECTORS

John McQuaig – Chair

McQuaig and Welk, PLLC
Wenatchee, Washington, USA

Alexander Kharitonov

President, CCI/Russia
St. Petersburg, Russian Federation

Scott Barge – Vice Chair

Director of Institutional Research and
Effectiveness
Eastern Mennonite University
Harrisonburg, VA, USA

Susan Koslowsky

Senior VP, Emprise Bank
Towanda, KS, USA

Debra Blews

Senior Fellow, CCCU
Harbor Springs, MI, USA

Stephen Buller

CEO, Legacy Kitchen
Calgary, Alberta, Canada

Allon Lefever

President, AB Hospitality Company
Lancaster, Pennsylvania, USA

Jurgita Choromanskytė

Political Consultant, Lecturer
Klaipėda, Lithuania

Pär Lidaker

Owner, BJS Group AB
Smalandsstenar, Sweden

Merrill Ewert

President Emeritus, Fresno Pacific University
Sun City West, AZ, USA

Johann Matthies

MB Missions, Europe
Horn-Bad Meinberg, Germany

Roger Friesen

Executive VP/Business Development
Palliser Furniture Holdings Ltd.
East St. Paul, Manitoba, Canada

Ronald Mulder

Consultant
Holland, Michigan, USA

Ron Funk

President, Diverse Properties Ltd
Abbotsford, British Columbia, Canada

Bill Goff

Ministry and Mission Consultant
Rome, Georgia, USA

Olga Rubel

Coordinator of Programs, Mennonite Center
Zaporozhye, Ukraine

Cornelia Horsch

HORSCH Maschinen GmbH
Schwandorf, Germany

Klementina Shahini

Principal, Lezha Academic Center
Lezhe, Albania

Bryan Kay

Consulting CFO and Controller
Burlington, Washington, USA

Peter Tielmann

President, EQ3
East St. Paul, Manitoba, Canada

FOUNDING BOARD OF DIRECTORS MEMBERS

Art and Leona DeFehr

Palliser Furniture
Winnipeg, Manitoba, Canada

Otonas and Raimonda Balčiūnas

Global Consulting Services
Carmel, Indiana, USA

Dennis and Rene Neumann

Founding Board members
Abbotsford, British Columbia, Canada



BOARD EMERITUS MEMBERS

Ed Buller

Winnipeg, Manitoba, Canada

Russ and June Michealsen

Santa Barbara, California, USA

Stanley Clark*

Emily, Minnesota, USA

Gerald Neufeld

Point Roberts, Washington, USA

Hansuli Gerber

Geneva, Switzerland

Myrl Nofziger

Goshen, Indiana, USA

Todd Gibson

Normandy Park, Washington, USA

Ken Penner

Winnipeg, Manitoba, Canada

Bruce and Marianne Konrad

Abbotsford, British Columbia, Canada

Ben Sprunger

Nokomis, Florida, USA

Howard Loewen

Altadena, California, USA

Dwight Wyse

Harrisonburg, Virginia, USA

*deceased





Please consider a gift to LCC.
Your generosity will make a difference for our students.

GIVE ONLINE AT
www.lcc.lt/annual-fund

SEND A CHECK TO

In the United States:
LCC International Fund, Inc.
P.O. Box 101787
Pasadena, CA 91189-0045

In Canada:
LCC International Fund, Inc.
P.O. Box 2142
Abbotsford, BC V2T 3X8



PRESIDENT@LCC.LT



+ 370 46 310 745
+ 370 46 310 460



KRETINGOS 36, KLAIPĖDA, LITHUANIA, LT - 92307



WWW.LCC.LT